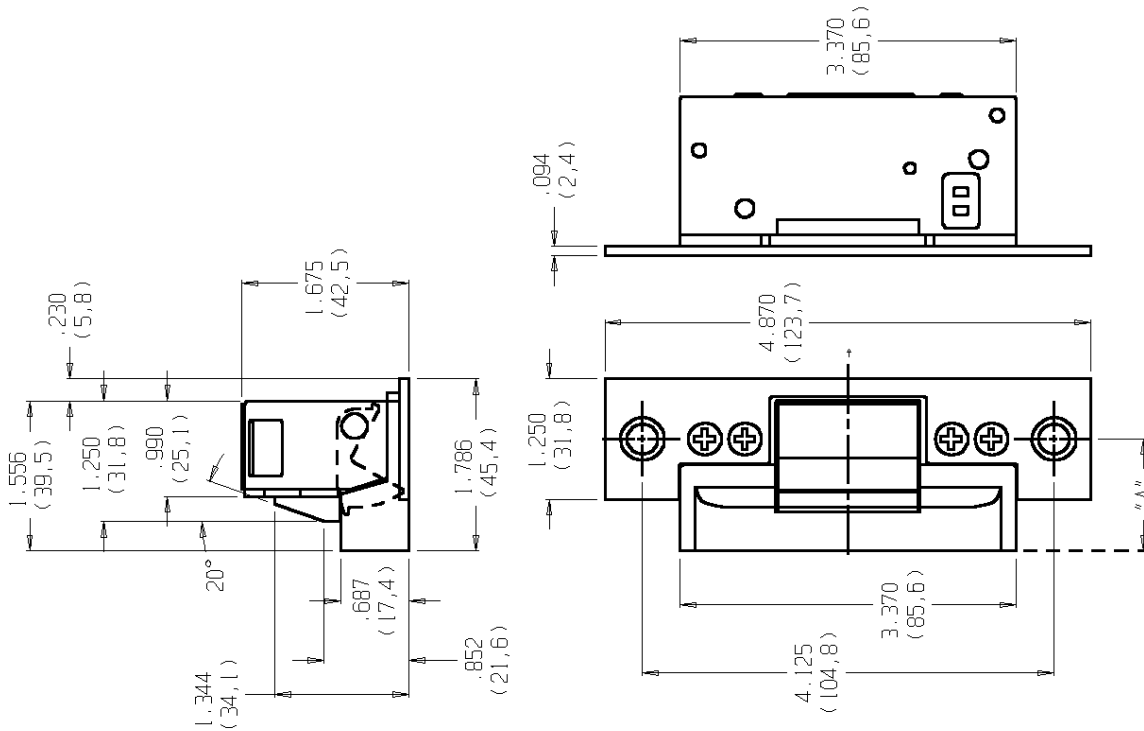
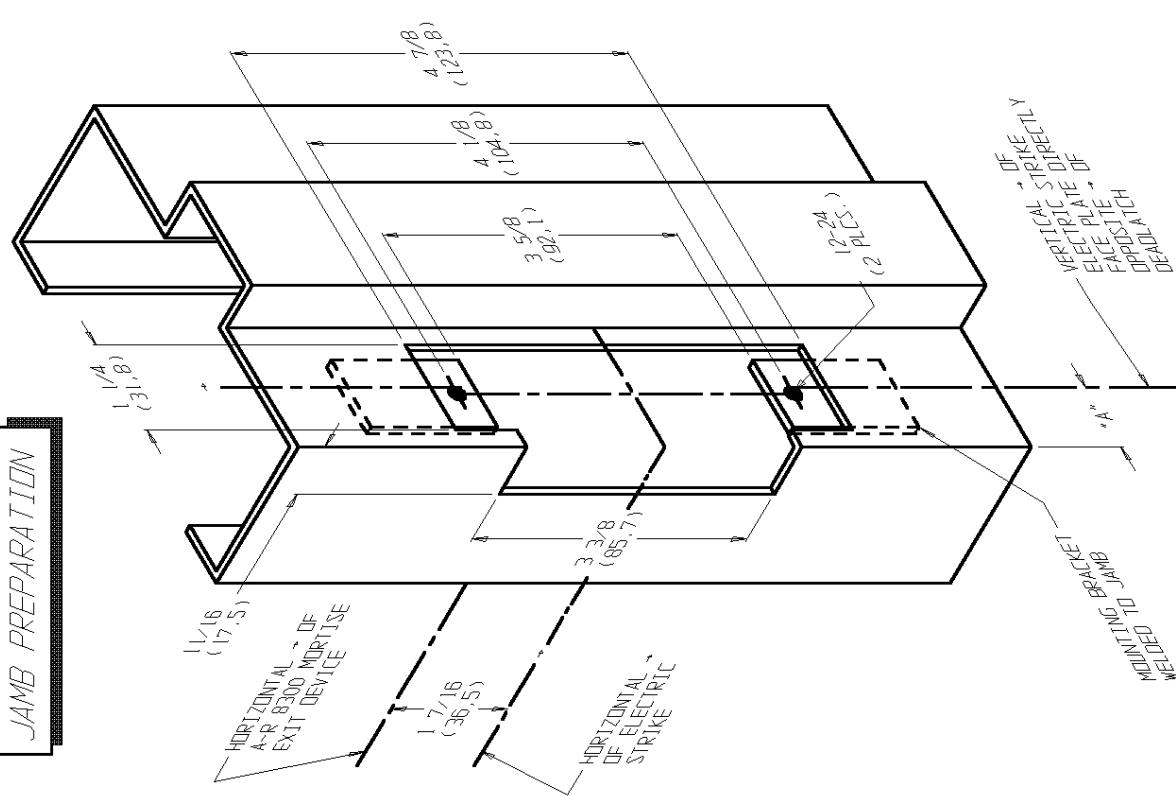


**ELECTRIC STRIKE DIMENSIONS**



STANDARD UNIT FITS DIM. "A" UP TO 1 1/16" (SEE DASH NO.)

**JAMB PREPARATION**



NOTE: WHEN DOOR SILENCERS ARE USED ON FRAME, ADJUST STRIKE LOCATION TO ENSURE COMMON LATCH AND STRIKE CENTERLINES.

FOR EXTENDED LIP: (DIM "A" DOOR → TO JAMB EDGE)

| DASH NO. | DIM "A" | DASH NO. | DIM "A" | DIM "A" | DASH NO. | DIM "A" |
|----------|---------|----------|---------|---------|----------|---------|
| NONE     | 1.06    | -05      | 2.00    | 2.63    | -10      | 2.63    |
| -01      | 1.50    | -06      | 2.13    | 2.75    | -11      | 2.75    |
| -02      | 1.63    | -07      | 2.25    | 2.88    | -12      | 2.88    |
| -03      | 1.75    | -08      | 2.38    | 3.00    | -13      | 3.00    |
| -04      | 1.88    | -09      | 2.50    |         |          |         |

ADAMS RITE MANUFACTURING COMPANY  
POMONA, CA. 91767

7128 ELECTRIC STRIKE  
FOR METAL JAMB WITH  
8300 MORTISE EXIT

REF. INSTRUCTION SHEET NO.:  
80-0180-359

TEMPLATE NO.:  
52090-0

DATE:  
09-13-95